

JET

JTS-600X

CIRCULAR SAW BENCH

Original Language:

GB
Operating Instructions

Translations:

D
Gebrauchsanleitung

F
Mode d'emploi



JPW (Tool) AG
Tämperlistrasse 5
CH-8117 Fällanden
Switzerland

Phone +41 44 806 47 48

Fax +41 44 806 47 58

www.jettools.com

M - 10000070XM,10000070XT

2018-02

CE



CE-Conformity Declaration CE-Konformitätserklärung Déclaration de Conformité CE

Product / Produkt / Produit:

Table saw
Tischkreissäge
la scie circulaire

JTS-600X

Brand / Marke / Marque:

JET

Manufacturer / Hersteller / Fabricant:

JPW (Tool) AG, Tämperlistrasse 5, CH-8117 Fällanden
Schweiz / Suisse / Switzerland

We hereby declare that this product complies with the regulations
Wir erklären hiermit, dass dieses Produkt der folgenden Richtlinie entspricht
Par la présente, nous déclarons que ce produit correspond aux directives suivantes

2006/42/EC

Machinery Directive
Maschinenrichtlinie
Directive Machines

2014/30/EU

Electromagnetic Compatibility
Elektromagnetische Verträglichkeit
compatibilité électromagnétique

designed in consideration of the standards
und entsprechend folgender zusätzlicher Normen entwickelt wurde
et été développé dans le respect des normes complémentaires suivantes

EN ISO 12100:2010

EN 1870-19:2013

EN 60204-1:2006+A1:2009

EN 61000-6-2:2005

EN 61000-6-4:2007+A1:2011

Responsible for the Documentation / Dokumentations-Verantwortung / Responsabilité de Documentation:
Head Product-Mgmt. / Leiter Produkt-Mgmt. / Resp. Gestion des Produits
JPW (Tool) AG



2018-01-26 Jan Dätwyler, General Manager
JPW (Tool) AG, Tämperlistrasse 5, CH-8117 Fällanden

GB - ENGLISH

Operating Instructions

Dear Customer,

Many thanks for the confidence you have shown in us with the purchase of your new JET-machine. This manual has been prepared for the owner and operators of a JET JTS-600X table saw to promote safety during installation, operation and maintenance procedures. Please read and understand the information contained in these operating instructions and the accompanying documents. To obtain maximum life and efficiency from your machine, and to use the machine safely, read this manual thoroughly and follow instructions carefully.

...Table of Contents

1. Declaration of conformity

2. Warranty

3. Safety

Authorized use

General safety notes

Remaining hazards

4. Machine specifications

Technical data

Noise emission

Dust emission

Contents of delivery

Description of machine

5. Transport and start up

Transport and installation

Assembly

Dust connection

Mains connection

Starting operation

6. Machine operation

7. Setup and adjustments

Changing saw blade

Mounting the riving knife

Mounting the saw guard

Rising and tilting saw blade

Sliding table setup

Rip fence setup

Sawblade tilting

Crosscut table setup

Crosscut fence setup

8. Maintenance and inspection

9. Troubleshooting

10. Environmental protection

11. Available accessories

12. „Safe operation” appendix A

On our own responsibility we hereby declare that this product complies with the regulations* listed on page 2.

Designed in consideration with the standards**.

CE type examination*** performed by****.

2. Warranty

JPW (Tool) AG guarantees that the supplied product(s) is/are free from material defects and manufacturing faults.

This warranty does not cover any defects which are caused, either directly or indirectly, by incorrect use, carelessness, damage due to accidents, repairs or inadequate maintenance or cleaning as well as normal wear and tear.

Further details on warranty (e.g. warranty period) can be found in the General Terms and Conditions (GTC) that are an integral part of the contract.

These GTC may be viewed on the website of your dealer or sent to you upon request.

JPW (Tool) AG reserves the right to make changes to the product and accessories at any time.

3. Safety

3.1 Authorized use

This machine is designed for sawing wood, wood derived materials as well as similar to be machined hard plastics only.

Machining of other materials is not permitted and may be carried out in specific cases only after consulting with the manufacturer.

No metal workpieces may be machined.

The workpiece must allow to safely be loaded, supported and guided.

No cuts without using the rip fence, the 90° fence or the sliding table may be performed.

No submerged cuts by removing the riving knife and/or saw guard may be performed.

The use of a power feeder is not considered.

The proper use also includes compliance with the operating and maintenance instructions given in this manual.

The machine must be operated only by persons familiar with its operation, maintenance and repair and who are familiar with its hazards.

The required minimum age must be observed.

The machine must only be used in a technically perfect condition.

When working on the machine, all safety mechanisms and covers must be mounted.

In addition to the safety requirements contained in this operating instruction and your country's applicable regulations, you should observe the generally recognized technical rules concerning the operation of woodworking machines.

Any other use exceeds authorization. In the event of unauthorized use of the machine, the manufacturer renounces all liability and the responsibility is transferred exclusively to the operator.

3.2 General safety notes

Woodworking machines can be dangerous if not used properly. Therefore the appropriate general technical rules as well as the following notes must be observed.

1. Declaration of conformity

Read and understand the entire instruction manual before attempting assembly or operation.

Keep this operating instruction close by the machine, protected from dirt and humidity, and pass it over to the new owner if you part with the tool.

No changes to the machine may be made.

Daily inspect the function and existence of the safety appliances before you start the machine. Do not attempt operations in this case, protect the machine by unplugging the mains cord.

Remove all loose clothing and confine long hair.

Before operating the machine, remove tie, rings, watches, other jewellery, and roll up sleeves above the elbows.

Wear safety shoes; never wear leisure shoes or sandals.

Always wear the approved working outfit :

- safety goggles
- ear protection
- dust protection

Do not wear gloves while operating this machine.

For the safe handling of sawblades wear work gloves.

Observe the chapter "safe operation" in this manual.

Check the correct rotation of the sawblade before operating the machine.

Do not start cutting operation until sawblade is at full speed.

Control the stopping time of the machine, it may not be longer than 10 seconds.

Do not use side pressure to stop rotating blade.

Insure that the workpiece does not roll when cutting round pieces.

Use suitable table extensions and supporting aids for difficult to handle workpieces.

Always hold and guide the workpieces safely during machining.

Pay particular attention to instructions on reducing the risk of kickback.

The supplied raving knife must always be used. Adjust the space to the sawblade to be between 2 to 5mm.

Do not perform any operation freehand.

Never reach around or over the saw blade.

When ripping narrow workpieces (<120mm) use as push-stick or push-wood.

Always use crossfeed guide for cutting off.

The use of dado-blades is not permissible.

Make sure that small cut off workpieces will not be caught and thrown away by the rising saw blade teeth.

Take care when slotting.

Remove cut and jammed workpieces only when motor is turned off and the machine is at a complete standstill.

Install the machine so that there is sufficient space for safe operation and workpiece handling.

Keep work area well lighted.

The machine is designed to operate in closed rooms and must be placed stable on firm and levelled ground.

Make sure that the power cord does not impede work and cause people to trip.

Keep the floor around the machine clean and free of scrap material, oil and grease.

Stay alert!
Give your work undivided attention.
Use common sense.

Keep an ergonomic body position.
Maintain a balanced stance at all times.

Do not operate the machine when you are tired.

Do not operate the machine under the influence of drugs, alcohol or any medication. Be aware that medication can change your behaviour.

Keep children and visitors a safe distance from the work area.

Never reach into the machine while it is operating or running down.

Never leave a running machine unattended. Before you leave the workplace switch off the machine.

Do not operate the electric tool near inflammable liquids or gases.
Observe the fire fighting and fire alert options, for example the fire extinguisher operation and place.

Do not use the machine in a damp environment and do not expose it to rain.

Wood dust is explosive and can also represent a risk to health.

Dust from some tropical woods in particular, and from hardwoods like beach and oak, is classified as a carcinogenic substance.
Always use a suitable dust extraction device

Before machining, remove any nails and other foreign bodies from the workpiece.

Specifications regarding the maximum or minimum size of the workpiece must be observed.

Do not remove chips and workpiece parts until the machine is at a complete standstill.

Never operate with the guards not in place – serious risk of injury!

Do not stand on the machine.

Connection and repair work on the electrical installation may be carried out by a qualified electrician only.

Always unwind any extension cords fully.

Have a damaged or worn cord replaced immediately.

Do not use the machine when the ON-OFF switch does not operate correctly.

Make all machine adjustments or maintenance with the machine unplugged from the power source.

Use only sawblades according to EN 847-1.

Never use sawblades made from High Speed Steel (HSS).

Take care that the selection of the saw blade depends on the material to be cut.

Remove defective sawblades immediately.

A worn table insert must be replaced.

3.3 Remaining hazards

When using the machine according to regulations some remaining hazards may still exist

The moving sawblade in the work area can cause injury.

Broken saw blades can cause injuries.

Thrown workpieces can lead to injury

Tipping of the workpiece due to insufficient support can lead to injury.

Wood chips and sawdust can be health hazards. Be sure to wear personal protection gear such as safety goggles ear- and dust protection.
Use a suitable dust exhaust system.

The use of incorrect mains supply or a damaged power cord can lead to injuries caused by electricity.

The type and condition of the sawblade is important in keeping the noise level as low as possible. This does not negate the fact that extra safety equipment such as ear protection must be used.

4. Machine specifications

4.1 Technical data

Machine Table	800x350 mm
Right extension table	800x270 mm
Rear extension table	415x350mm
Sliding table size	1000x255 mm
Max. travel of sliding table	660 mm
Max. length of cut	610 mm
Sawblade diameter	max 250 mm
Blade bore diameter	30 mm
Blade speed n ₀	4000 rpm
Cutting height at 90°/45°	80/54 mm
Tilting range of blade	90°- 45°
Max. width of rip cut	610 mm
Dust port diameter	100mm
Weight	145 kg
Mains	230V ~1/N/PE 50Hz
Motor output power	1,5kW (2HP) S1
Reference current	11 A
Extension cord (H07RN-F):	3x1,5mm ²
Installation fuse protection	16A
Mains	400V ~3/PE 50Hz
Motor output power	1,5 kW (2 HP) S1
Reference current	4.7 A
Extension cord (H07RN-F):	4x1,5mm ²
Installation fuse protection	16A

4.2 Noise emission

Determined according to EN 1870-1
(Inspection tolerance 4 dB)
Workpiece plywood 16mm:

Acoustic power level (according to EN ISO 3746):	
Idling	LwA 98,2 dB (A)
Operating	LwA 101,8 dB (A)

Acoustic pressure level (according to EN ISO 11202):	
Idling	LpA 84,2 dB (A)
Operating	LpA 88,5 dB (A)

The specified values are emission levels and are not necessarily to be seen as safe operating levels. This information is intended to allow the user to make a better estimation of the hazards and risks involved.

4.3 Dust emission

The circular saw has been dust emission evaluated.

At an air velocity of 20m/sec on the dust port dia. 100mm:

Vacuum pressure	850Pa
Volume flow	565 m ³ /h

The TRK-value of 2 mg/m³ is not exceeded.

4.4 Content of delivery

Machine stand
Sliding table
Crosscut table
Crosscut fence
Telescopic arm
Rare extension table
Right extension table
Rip fence with dual fence profile
Rip fence support bar
Saw guard
Sawblade 250mm
Dust connection hose and Y-adaptor
Hose tye
Push stick

Operating tools
Assembly bag
Operating manual
Spare parts list

4.5 Description of machine

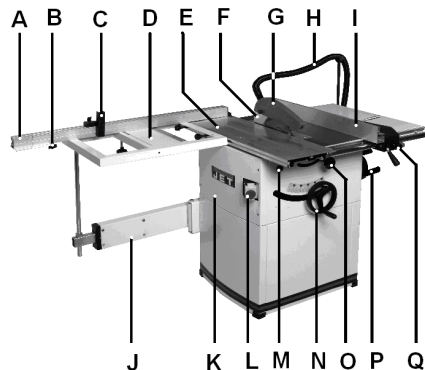


Fig 1

- A.....Crosscut fence
- B.....Pull out lock knob
- C....Crosscut stop
- D.....Crosscut table

- E.....Sliding table
- F.....Raving knife
- G.....Saw guard
- H....Dust connection hose
- I.....Rip fence
- J.....Telescopic arm
- K....Front cabinet cover
- L....On/ Off switch
- M....Sliding table lock
- N....Blade rise handwheel
- O...Blade tilt lock
- P....Blade tilt handwheel
- Q....Rip fence micro adjustment

5. Transport and start up

5.1 Transport and installation

For transport to the desired location use a forklift or hand trolley. Make sure the machine does not tip or fall off during transport.

The machine is designed to operate in closed rooms and must be placed stable on firm and levelled ground.

The machine must be levelled in both directions to assure good sliding motion of the sliding table.

If possible, the machine must be placed on rubber plates which act as shock absorbers and reduce the noise level.

For packing reasons the machine is not completely assembled.

5.2 Assembly

If you notice any transport damage while unpacking, notify your supplier immediately. Do not operate the machine!

Dispose of the packing in an environmentally friendly manner.

Clean all rust protected surfaces with a mild solvent.

Mounting machine stand:

Attach the side panels to the front and rear panel with the supplied bolts, flat washers and nuts.

Attach the 4 rubber pads.

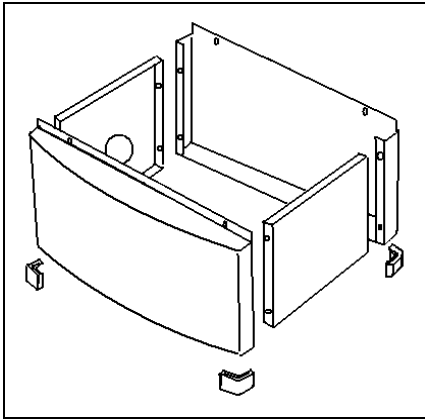


Fig 2

Mounting machine to stand:

Access the machine inside by removing the front cabinet cover (bayonet mount, loosen screws and lift off the cover, Fig 3)

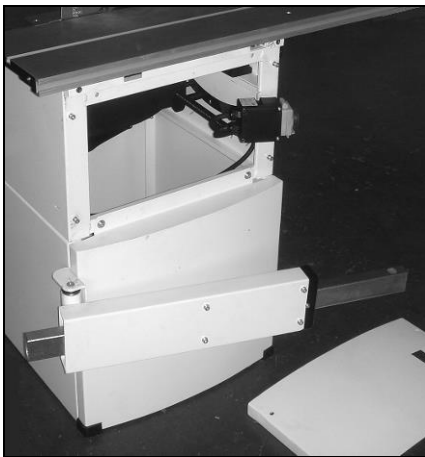


Fig 3

Use lifting straps to lift the machine.

Warning:

The machine is heavy (145 kg)! Assure the sufficient load capacity and proper condition of your lifting devices.

Never step underneath suspended loads.

Attach the machine to the stand with the supplied hex socket bolts and washers.

Mounting telescopic arm:

Place the mounting plate on the inside of the cabinet and attach the telescopic arm with the supplied hex socket bolts (Fig 4)



Fig 4

Mounting table extensions

Attach rear extension table (A, Fig 5) to the machine table with hex head screws and washers.

Attach right extension table (B) to the machine table with hex head screws and washers.

Put table surfaces in level to the main table.

Use the rip fence profile to check and the grub screws (C) to adjust.

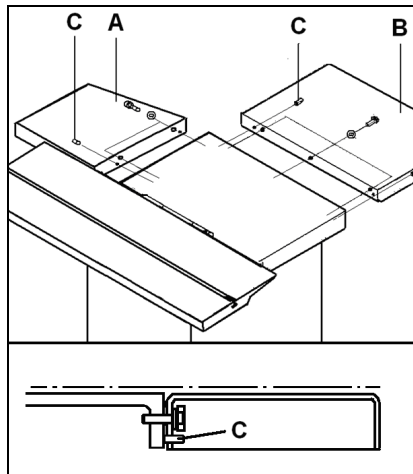


Fig 5

Mounting rip fence support bar

Mount the rip fence support bar (Y, Fig 6) to the front of the saw table and right table extension.

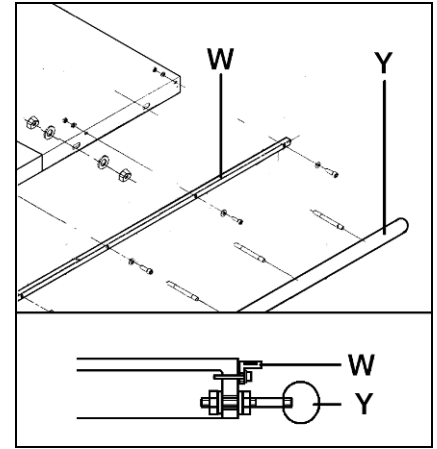


Fig 6

Mount the scale carrier (W).

Mounting rip fence

Mount the rip fence to the rip fence support bar.



Fig 7

The rip fence must be guided parallel to the table surface. Adjust the round bar (Y) up-down as needed.

Mounting sliding table:

Loosen the screws and lift the sliding table end covers

Loosen 2 screws and lift the sliding table end cover.

Slide the sliding table carefully over the 4 guide rollers (Fig 8).

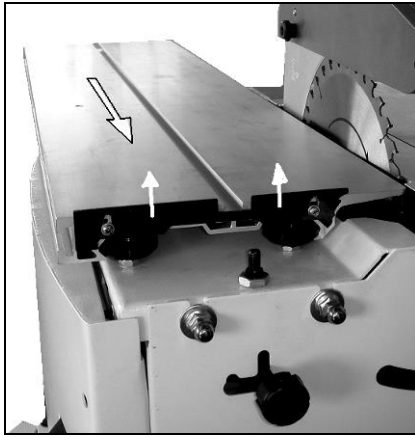


Fig 8

Lower the sliding table end cover and tighten screws.

Sliding Table Adjustment:

The sliding table is adjusted ex works.

The sliding table must be aligned to run parallel to the sawblade and table surface to be 0,1 - 0,4 mm higher than the machine table. Use rip fence profile to check (Fig 9).

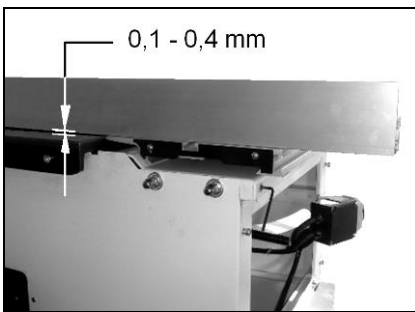


Fig 9

Adjustment:

The sliding table guide assembly can be adjusted up-down and parallel to the sawblade.

Loosen the nuts (D, Fig 10) as needed.

Grub screws (C) allow a guided adjustment in vertical and horizontal direction.

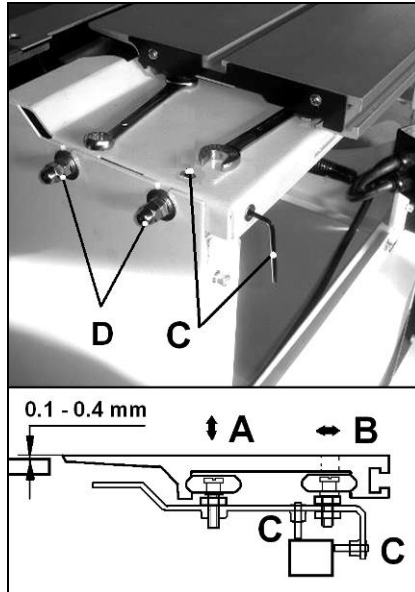


Fig 10

The sliding table guide rollers can be used for micro adjustments.

A) Adjustable in height, for precise alignment to the machine table

B) Eccentric shafts, for backlash-free movement of the roller guide.

Mounting Sawblade

See chapter 7.1

Adjusting Raving Knife

See chapter 7.2

Mounting Saw Guard

See chapter 7.3

Mounting crosscut table

See chapter 7.8



Fig 11

Mounting crosscut fence

See chapter 7.9

5.3 Dust connection

Before initial operation, the machine must be connected to a dust extractor. The suction should switch on automatically when the saw is switched on.

A connecting hose, a hose support, a Y-piece and a hose tie are supplied with the machine.

Mounting Hose Support:

Attach the hose support (AA, Fig 12) to the table extension with the supplied fastening clip.

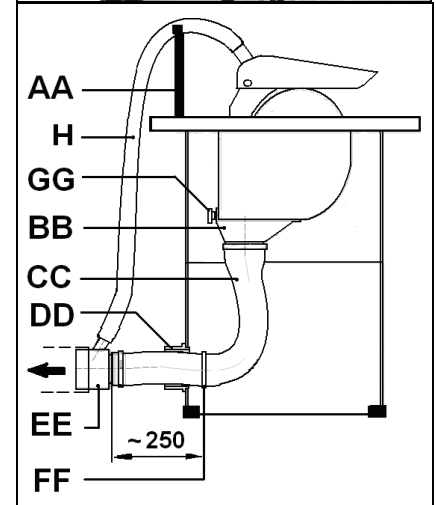
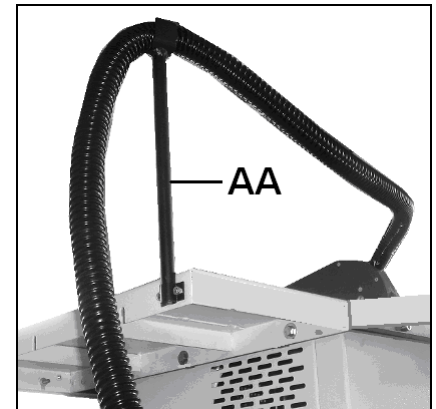


Fig 12

Mount the plastic hose protection tube (DD) into the machine stand.

Mount at a distance of approximately 250mm to the end an additional hose tie (FF). This will protect the hose from pulling out .

Mount the Y-piece (EE) and the connecting hose (H) for the upper dust collection.

The flow rate on the suction port dia. 100mm must be 20m/sec.

Flexible hoses must be of non-flammable quality, and must be connected to the machine ground system.

5.4 Mains connection

Mains connection and any extension cords used must comply with applicable regulations.

The mains voltage must comply with the information on the machine licence plate.

The mains connection must have a 16A surge-proof fuse.

Only use connection cables marked H07RN-F

Connections and repairs to the electrical equipment may only be carried out by qualified electricians.

Attention:

-Check first if the saw spindle runs freely and if all safety devices are fitted before starting the machine. For safety reasons this must only be done without the sawblade installed!

- If the direction of rotation is not correct, the phase converter inside the CCE Euro plug must be pushed in and turned 180°. (Clockwise direction of the spindle is correct).

5.5 Starting operation

You can start the machine with the green On-button. The red Off-button stops the machine.

In case of machine overload the motor overload cut-off will react. After appr.10 min of cooling the machine can be started again.

350

6. Machine operation

Correct working position:

In front of the machine standing out of the line of cutting (danger zone).

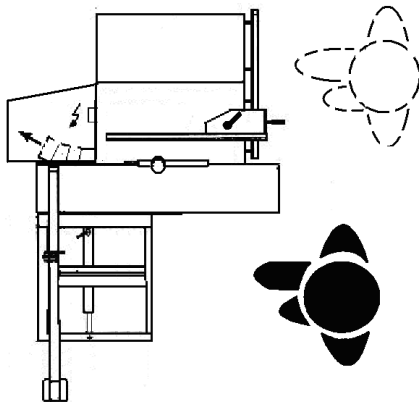


Fig 13

Workpiece handling:

Hands placed flat on the workpiece outside the cutting area.

Feed the workpiece towards the saw blade in the direction of the saw line.

Push the workpiece steadily forward; complete the cut as a single movement.

Support long and wide workpieces with helping roller stands.

The use of a power feeder is not considered.

Operating hints:

Work only with a sharp and flawless sawblade.

Take care that the selection of the saw blade depends on the material to be cut.

Use a suitable wedge to prevent round timber from turning under the pressure of the cut.

Use suitable table extensions and supporting aids for difficult to handle workpieces.

Always hold and guide the workpieces safely during machining.

Do not perform any operation freehand.

Take care when slotting.

When ripping narrow workpieces (<120mm) use as push-stick or push-wood.

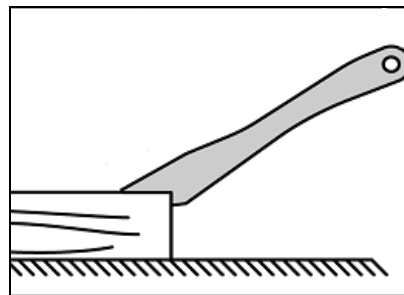


Fig 14

Make sure that small cut off workpieces will not be caught and thrown away by the rising saw blade teeth.

Remove cut and jammed workpieces only when motor is turned off and the machine is at a complete standstill.

Pay particular attention on reducing the risk of kickback.

The supplied raving knife must always be used.

For the authorized use of the machine observe the appendix A "safe operation" (on the last pages of this operating manual)

A.1.: Ripping

A.2.: Ripping of narrow stock

A.3.: Crosscutting on rip fence

A.4.: Use of push wood handle

7. Setup and adjustments

General note:

Setup and adjustment work may only be carried out after the machine is protected against accidental starting by pulling the mains plug.

7.1 Changing sawblade

The sawblade has to meet the technical specification.

Use only sawblades according to EN 847-1

The maximum diameter of the saw blades used on the machine is 250 mm.

Check sawblade for flaws (cracks, broken teeth, bending) before installation. Do not use faulty sawblades.

Warning:

The use off HSS saw blades is prohibited; use only carbide tipped saw blades.

The sawblade teeth must point in cutting direction (down)

Always wear suitable gloves when handling sawblades.

WARNING:

When installing or changing saw blade, always disconnect saw from power source, unplug!

Remove the crosscut table.

Remove the sliding table.

Raise the main sawblade to its highest position.

Remove the saw guard.

Changing saw blade:

Loosen the arbor nut (J, Fig 15) while stopping the arbor against rotation with the locking pin (K).

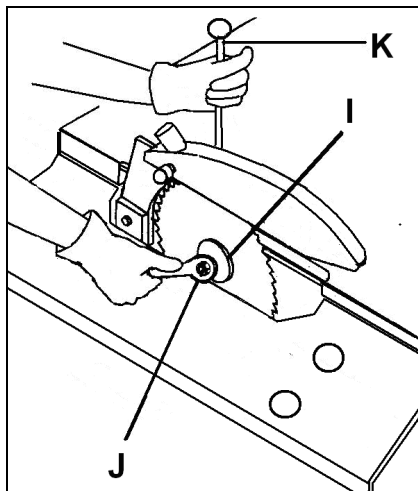


Fig 15

Attention: left hand thread.

Remove the arbor nut (J) and flange (I).

Place saw blade on arbor shaft making sure teeth point down at the front of the saw.

Reinstall flange, washer and arbor nut and securely tighten.

Remove the locking pin (K).

Check the correct position of the raving knife in regards to the saw blade (see Chapter 7.2).

Reinstall the saw guard and the sliding table.

7.2 Mounting the raving knife

The supplied raving knife must always be used.

The machine is equipped with a raving knife for the use of sawblades diameter 250 mm.

The raving knife has to be adjusted in such a way that over its entire length the gap between sawblade and raving knife does not exceed min. 3 mm and max. 8 mm (Fig 16).

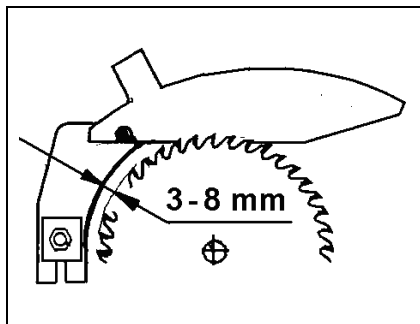


Fig 16

The raving knife (P, Fig 17) can be adjusted in both vertical and horizontal direction.

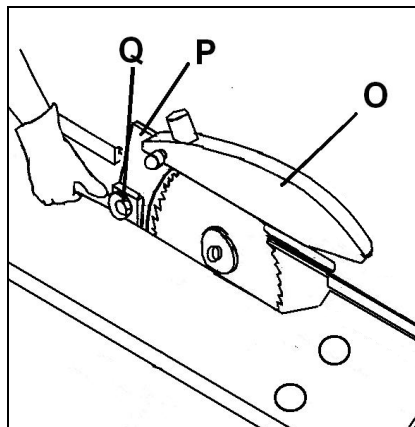


Fig 17

The height setting has to be adjusted in such a way that the sawguard bottom never exceeds more than 3 mm above the highest placed sawblade tooth.

After height adjustment always locks the central bolt (Q).

Never remove this raving knife. Kickbacks are severe and very dangerous.

No submerged cuts by removing the raving knife and/or saw guard may be performed.

7.3 Mounting the saw guard

The sawguard (O, Fig 17) must always be used.

Attach the saw guard to the raving knife (P).

The sawguard must be lowered to the workpiece to minimise the amount of exposed teeth.

Adjustment shall never be performed when the machine is running.

The saw guard has to be connected to the dust extractor system.

7.4 Rising and tilting sawblade

Setup adjustments of the sawblade shall never be performed when the machine is running.

Use the front hand wheel to raise the sawblade (one turn of the handwheel equals to approximately 3 mm of height setting).

Use the right hand wheel to tilt the sawblade.

Both 45° and 90° positive stops are factory set.

Start the machine with care.

7.5 Sliding table setup

Sliding table setup shall never be performed when the machine is running.

When loading panels and when rip cutting the sliding table must be locked.

It is recommended to clean the sliding table once a week, and to remove all sawdust and chips which gradually slow down the sliding table.

Never use oil or grease!

7.6 Rip fence setup

Rip fence setup shall never be performed when the machine is running.

Note:

The rip fence profile can be placed flat and adjusted in length.

-The cutting of small work pieces (width less than 120mm) shall only be performed with the rip fence profile placed flat (Fig 18).

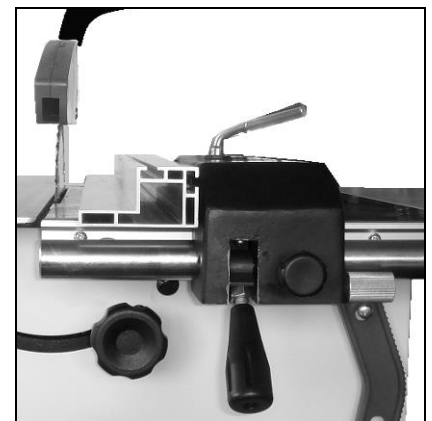


Fig 18

When cross cutting using the rip fence, to avoid the wood getting stuck between the fence and the riving knife (resulting in a highly dangerous kickback) it is necessary to position the fence so that its end corresponds with the front of the sawblade (Fig 19).

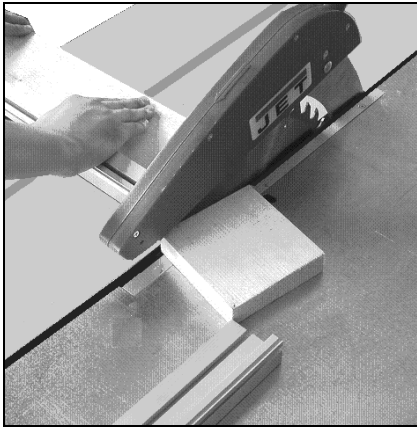


Fig 19

Start the machine with precaution.

7.7 Blade tilt 45° and 90° positive stop adjustment

The blade tilt positive stops can be adjusted with an allen key (Fig 20).



Fig 20

7.8 Crosscut table setup

Crosscut table setup shall never be performed when the machine is running.

Lift the crosscut table (R, Fig 21) onto telescopic arm and slide onto sliding table T-groove and lock in place).

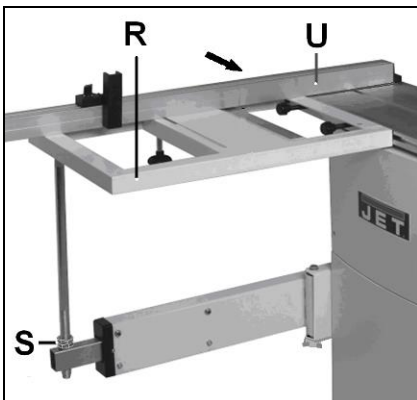


Fig 21

Crosscut table and telescopic arm are rough aligned ex works (The table surface must be in level with the sliding table).

Telescopic arm adjustment:

Mount the crosscut table at the rear of the sliding table.

Move the sliding table to the rear and align the crosscut table height with hex nuts (S). Use crosscut fence profile (U) to check.

Move the sliding table forward. For example: if the crosscut table falls, tighten the left adjust screw (T, Fig 22) until the crosscut table does not move in height during sliding table travel.

Loosen and tighten the adjust screws and lock nuts as needed.

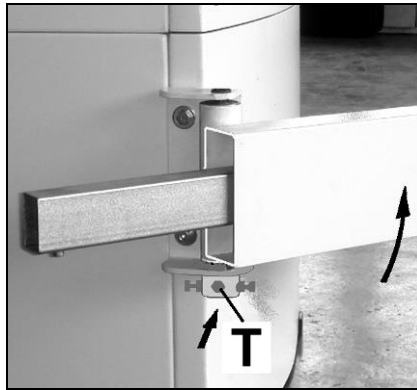


Fig 22

Finish alignment by setting crosscut table and machine table in level with nuts (S). Lock the nuts (S, Fig 21) against each other.

Start the machine with care.

7.9 Crosscut fence setup

Crosscut fence setup shall never be performed when the machine is running.

The cross-cut table has 2 precision holes, allowing the crosscut fence to be put in 2 positions: At the back and front of the crosscut table.

Simply put the fence onto the crosscut table and lock it in position using the supplied knobs.

The 90° adjustable stops (R, Fig 21) are factory set.

The fence scale is factory set. Adjustment can be made by moving the pivot point along the T-groove.

Confirm by test cuts.

When, after some time, the plastic protection cap at the front on the cross-cut fence is cut away, a new one has to be installed (part no.: JTS600-178).

8. Maintenance and inspection

General notes:

Maintenance, cleaning and repair work may only be carried out after the machine is protected against accidental starting by pulling the mains plug.

Repair and maintenance work on the electrical system may only be carried out by a qualified electrician.

Inspect the proper function of the dust extraction daily.

Keep the inside of the cabinet clear of sawdust and wood chips. Make sure the motor fan and fan cover are also kept clear of sawdust.

All protective and safety devices must be re-attached immediately after completed cleaning, repair and maintenance work.

Defective safety devices must be replaced immediately.

A worn table insert must be replaced.

Removal of dust chute blockage:

Cut off pieces can block off the chip flow in the lower saw guard.

Disconnect the machine from the power source, pull mains plug.

Remove the front cabinet cover.

Remove the lock knob (GG, Fig 23) and lower the dust port (BB).

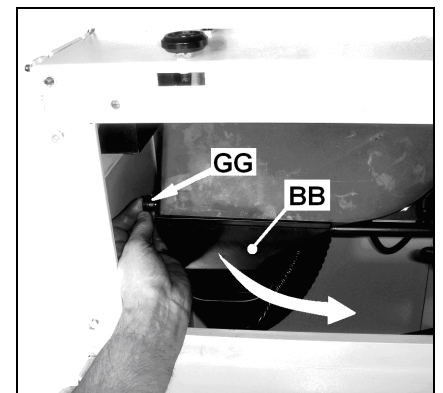


Fig 23

Remove blocking parts.

Reinstall the dust port and front cabinet cover immediately.

Cleaning:

Clean the machine regularly.

Remove rust from the table e.g. with WD-40® and a Scotch-Brite™ Hand Pad.

Never smoke while cleaning the machine, and especially when using petrol, kerosene or other inflammable products.

This could lead to an explosion and serious burns for the operator.

Saw blades:

Check saw blades regularly for faults. Replace a defective sawblades immediately.

Only use sharp and properly set saw blades.

The servicing of saw blades should only be performed by a trained person.

Main drive belt tensioning:

The machine is equipped with a durable Poly-V belt

In case of belt slip (yelling noise), the belt must be tightened.

Disconnect the machine from the power source, pull mains plug.

Remove the front cabinet cover.

Tilt the sawblade to 45° for better access.

Loosen the 2 hex bolts (Fig 24).



Fig 24

Tension the belt by lowering the sawblade (spindle nut moves the motor pivot plate).

Make sure the belt is not over tensioned, because this could lead to damage of the saw arbor and bearings.

Tighten the bolts.

Reinstall front cabinet cover.

Motor Break:

The motor break works electro-mechanically (break motor). If breaking time should exceed 10 seconds, the motor break assembly needs to be replaced. Contact your Jet service station immediately.

9. Trouble shooting

Motor doesn't start

*No electricity-
check mains and fuse.

*Defective switch, motor or cord-
consult an electrician.

*Overload has reacted-
Wait and start again.

Machine vibrates excessively

*Stand on uneven floor-
adjust levelling screws for even support.

*dust on saw flanges-
clean saw arbor and flanges.

*defective sawblade -
replace sawblade immediately

*Bad Poly-V-belt-
replace Poly-V-belt

Cut is not accurately square

*Stops not adjusted correctly-
check with square and adjust stops.

Material binds blade when ripping

*Fence not aligned with sawblade-
check and adjust rip fence.

*Wrapped wood-
select another piece of wood.

Material kicked back from blade

*Fence not aligned with sawblade-
check and adjust rip fence.

*Raving knife not in place-
high danger, mount immediately with guard.

Cutting surfaces is bad

*Wrong sawblade used
*Blade mounted backwards
*resin collection on sawblade
*sawblade is dull
*workpiece inhomogeneous
*Feed pressure too high-
Do not force the workpiece.

Blade does not raise or tilt

*Sawdust in mechanisms-
clean and regrease.

Sliding table does not move

*Sawdust in bearing guides-
wipe out any sawdust.

Low cutting performance

*Poly-V belt slips -
Tension main drive belt.

*Wrong voltage -
Check electric power supply

10. Environmental protection

Protect the environment.

Your appliance contains valuable materials which can be recovered or recycled. Please leave it at a specialized institution.

11. Available accessories

Stock number 708118

Universal mobile base 250kg



Fig 25

Stock number 10000073

Precision mitre gauge with adjustable stops -45° / 90° / +45°



Fig 26

Refer to the JET-Pricelist for various accessories.

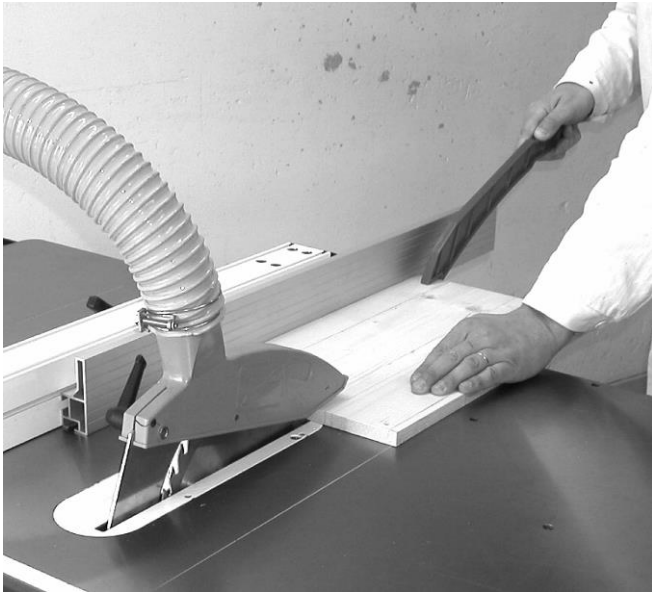
12. Safe operation

See appendix A (on the last pages of this operating manual)

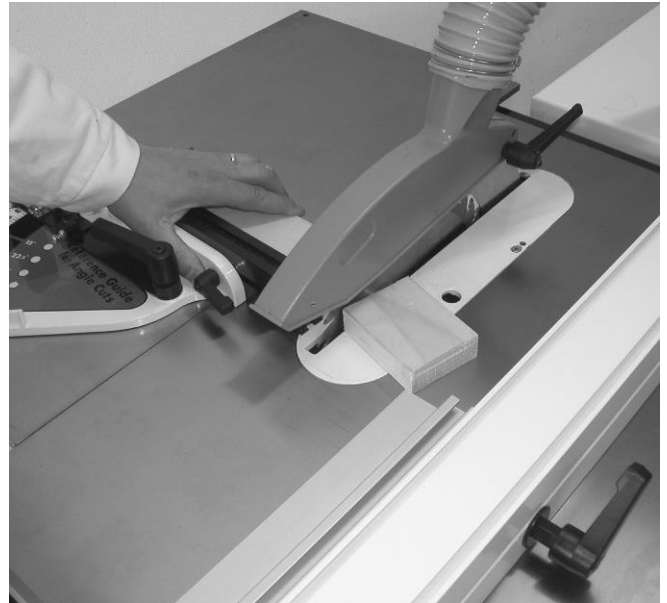
A.1.: Ripping
A.2.: Ripping of narrow stock
A.3.: Crosscutting on ripfence
A.4.: Use of push wood handle

JTS-600X Appendix A

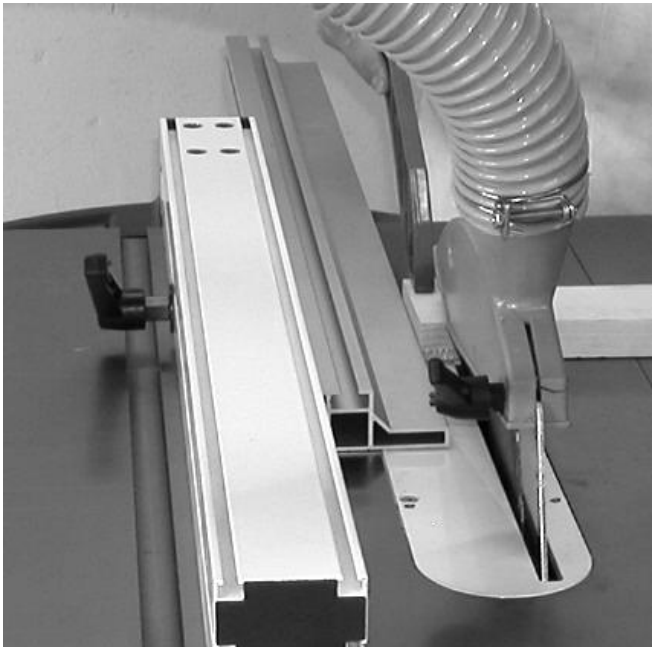
A1



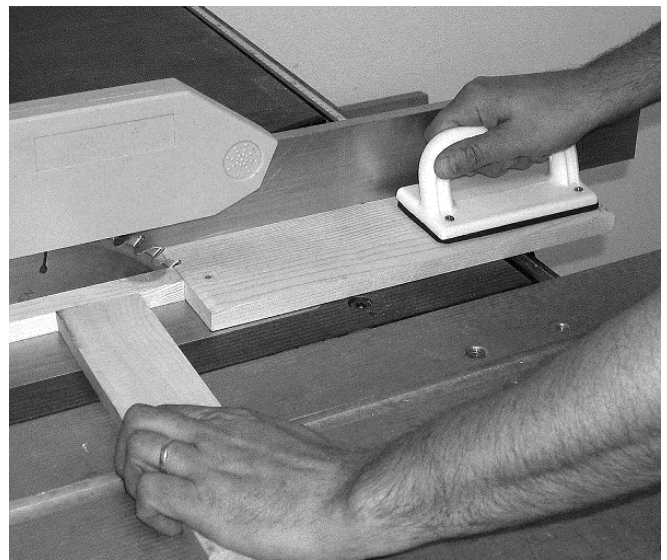
A3



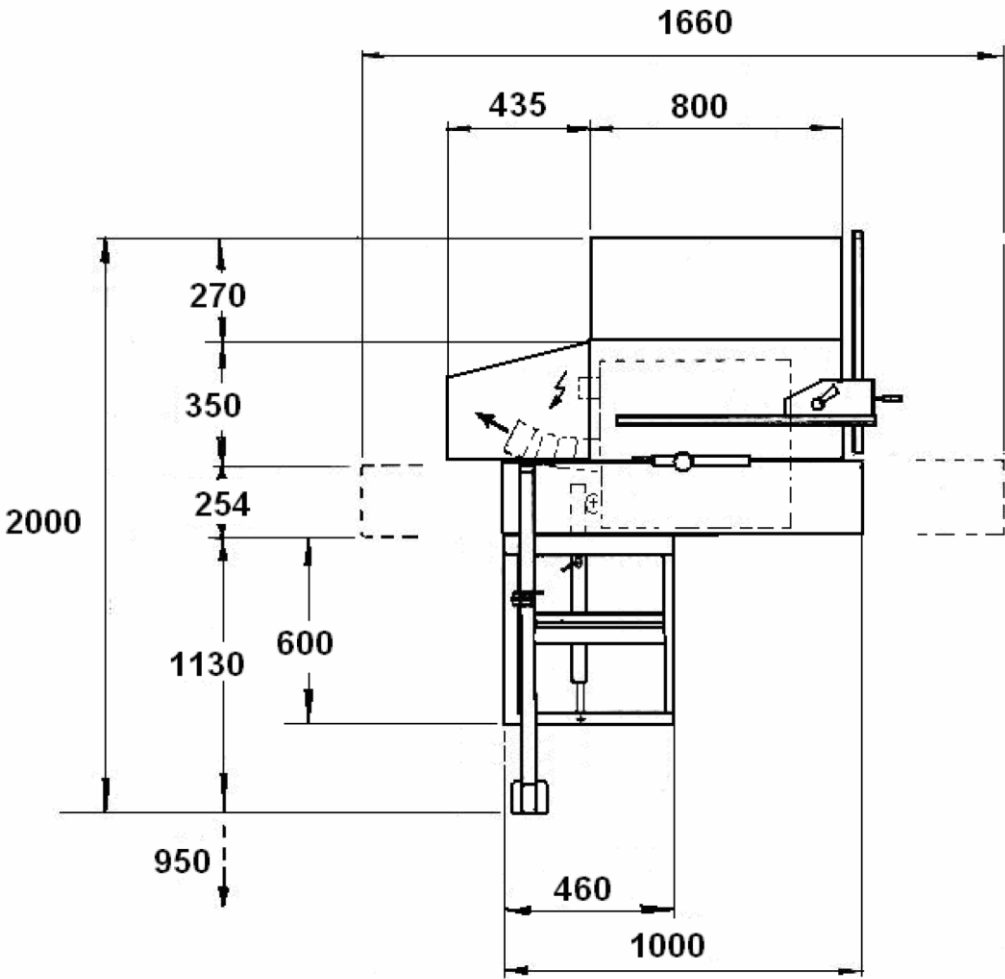
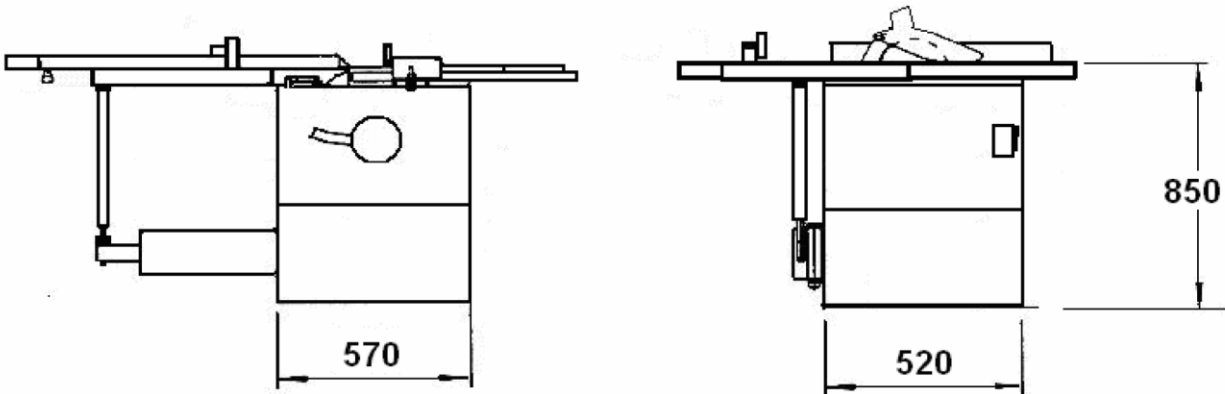
A2



A4



JTS-600X Floor Plan



J E T

JTS-600X

TABLE SAW

JTS-600X...10000070XM....230/50/1

JTS-600X....10000070XT....400/50/3

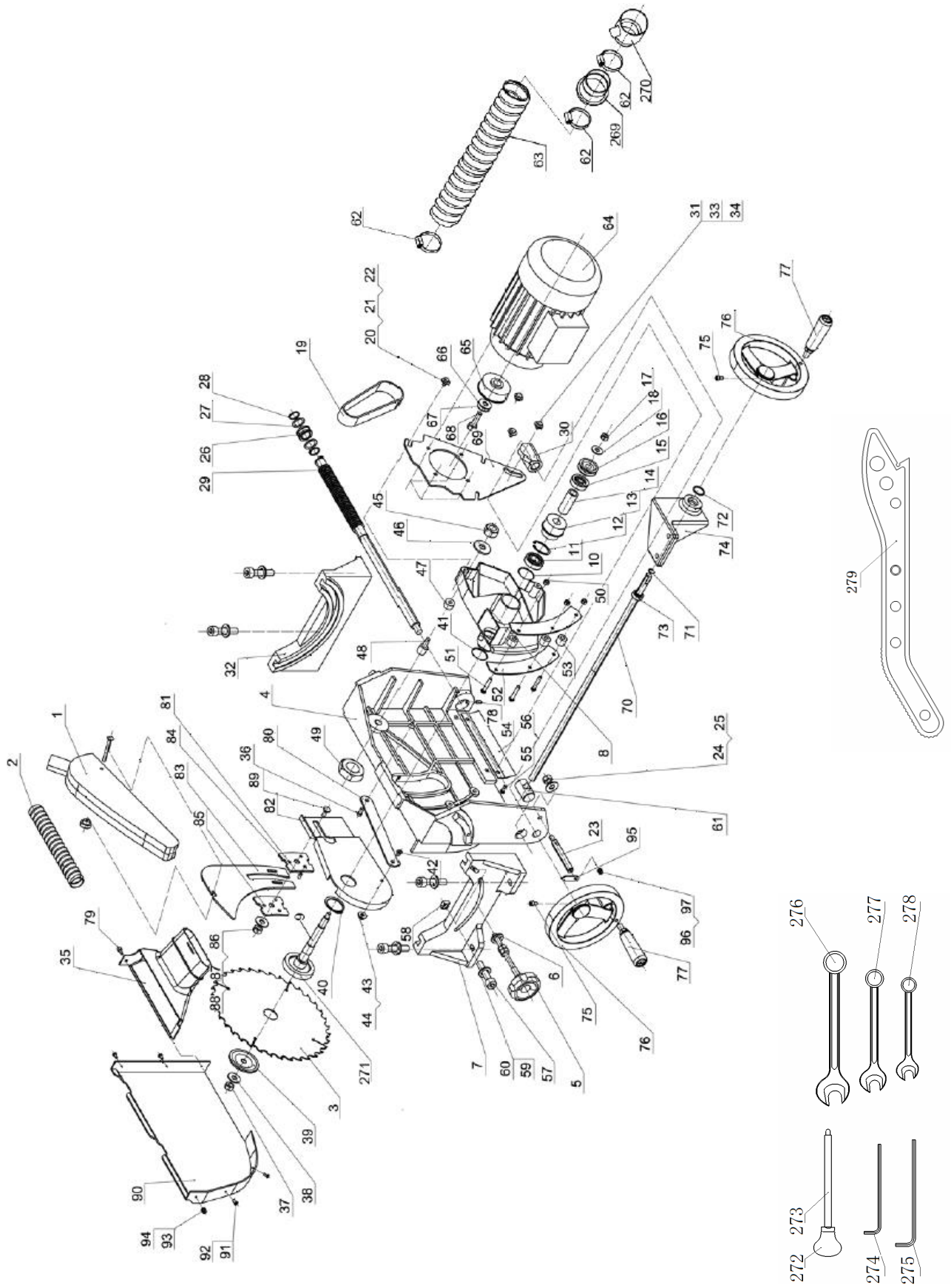
PARTS LIST ERSATZTEILLISTE LISTE DE PIECES

JPW (Tool) AG
Tämperlistrasse 5
CH-8117 Fällanden
Switzerland
Phone +41 44 806 47 48
Fax +41 44 806 47 58
www.jettools.com



P-10000070XM/XT 2017-11

Trunnion Assembly for JTS-600X



Trunnion Assembly for JTS-600X

Index	Part No.	Description	Size	Qty.
1	JTS600-001	Blade guard assy		1
2	JTS600-002	Dust collection tube(small)		1
3	JTS600-003	Blade	Ø250x3x Ø 30-36T	1
4	JTS600-004	Mount adjusting base		1
5	JTS600-005	Locking handle assy		1
6	JTS600-006	Washer	8	1
7	JTS600-007	Rotating support base A		1
8	JTS600-008	Mount base		1
9	JTS600-009	Main shaft		1
10	JTS600-010	Adjusting washer		4
11	JTS600-011	Bearing	6003-RZ	1
12	JTS600-012	Retaining ring		1
13	JTS600-013	Shaft pulley		1
14	JTS600-014	Tube		1
15	JTS600-015	Bearing	6301-RZ	1
16	JTS600-016	Adjusting wheel		1
17	JTS600-017	Nut	M8	1
18	JTS600-018	Washer	8	1
19	JTS600-019	Poly-belt	PJ150	1
20	JTS600-020	Hex screw	M6X30	3
21	JTS600-021	Washer	6	3
22	JTS600-022	Washer	6	3
23	JTS600-023	Indicator rod		1
24	JTS600-024	Nut	M8	1
25	JTS600-025	Washer	8	1
26	JTS600-026	Tube		1
27	JTS600-027	Washer		2
28	JTS600-028	Retaining ring		2
29	JTS600-029	Thread rod		1
30	JTS600-030	Thread tube		1
31	JTS600-031	Tube		1
32	JTS600-032	Rotating support base B		1
33	JTS600-033	Position screw		1
34	JTS600-034	Washer	8	1
35	JTS600-035	Dust funnel		1
	JTS600-035A	Funnel&hose clamp assly.(35, 62)		1
36	JTS600-036	Scew		1
37	JTS600-037	Lock Nut	M10X1.5 -Left	1
38	JTS600-038	Washer	10	1
39	JTS600-039	Blade flange		1
40	JTS600-040	Retaining ring		1
41	JTS600-041	Washer		2
42	JTS600-042	Screw	M6X20	1
43	JTS600-043	Nut	M6	1
44	JTS600-044	Washer	6	2
45	JTS600-045	Nut	M8	1
46	JTS600-046	Washer	8	1
47	JTS600-047	Tube II		1
48	JTS600-048	Position screw		1
49	JTS600-049	Nut	M6	1
50	JTS600-050	Nut	M6	3
51	JTS600-051	Screw	M6X35	3
52	JTS600-052	Clamping plate		2
53	JTS600-053	Tube I		3
54	JTS600-054	Guard for thread rod		1
55	JTS600-055	Washer	6	2

Trunnion Assembly for JTS-600X

Index	Part No.	Description	Size	Qty.
56	JTS600-056	Pan head screw	M6X8	2
57	JTS600-057	Nut	M8X20	2
58	JTS600-058	Square Nut		2
59	JTS600-059	Washer	8	2
60	JTS600-060	Internal washer	8	2
61	JTS600-061	45degree tilting rod		1
62	JTS600-062	Hose clamp		3
63	JTS600-063	Dust collection hose(big)		1
64	JTS600-064E	Motor 230V/50Hz/1		1
	JTS600-064AE	Motor 400V/50Hz/3		1
	JTS600-064RCE	Running Capacitor (not shown)	(20uF/450VAC)	1
	JTS600-064-B	Motor Break replacement parts assembly (not shown)		1
65	JTS600-065	Motor pulley		1
66	JTS600-066	Anti back washer		1
67	JTS600-067	Washer	8	1
68	JTS600-068	Screw		1
69	JTS600-069	Motor mounting bracket		1
70	JTS600-070	Tilting thread rod		1
71	JTS600-071	Clamping ring	12	1
72	JTS600-072	Clamping ring	22	1
73	JTS600-073	Joint bearing		1
74	JTS600-074	Bracket for joint bearing		1
75	JTS600-075	Screw	M6X16	2
76	JTS600-076	Big handle wheel		2
77	JTS600-077	Handle		2
78	JTS600-078	Scew	M6X10	1
79	JTS600-079	Knob		1
80	JTS600-080	Connecting plate		1
81	JTS600-081	Hex socket screw	M6x10	3
82	JTS600-082	Bracket for riving knife		1
83	JTS600-083	Riving knife		1
84	JTS600-084	Guide plate		1
85	JTS600-085	Press plate		1
86	JTS600-086	Washer	10	1
87	JTS600-087	Nut	M10	1
88	JTS600-088	Spring washer	10	1
89	JTS600-089	Screw	M10X25	1
90	JTS600-090	Inside blade guard		1
91	JTS600-091	Screw	M4X10	3
92	JTS600-092	Washer	5	5
93	JTS600-093	Screw	M4X20	2
94	JTS600-094	Self lock nut	M4	2
95	JTS600-095	Angle indicator		1
96	JTS600-096	Washer	4	1
97	JTS600-097	Screw	M4X8	1
269	JTS600-269	Cabinet adapter		1
270	JTS600-270	Hose adapter (Y-piece)		1
271	JTS600-271	Blade flange		1
272	JTS600-272	Ball handle		1
273	JTS600-273	Handlebar		1
274	JTS600-274	Allen key	6mm	1
275	JTS600-275	Allen key	5mm	1
276	JTS600-276	Socket wrench	16mm	1
277	JTS600-277	Socket wrench	13mm	1
278	JTS600-278	Socket wrench	10mm	1
279	JTS600-279	Pushing handle		1

Table and Frame Assembly for JTS-600X

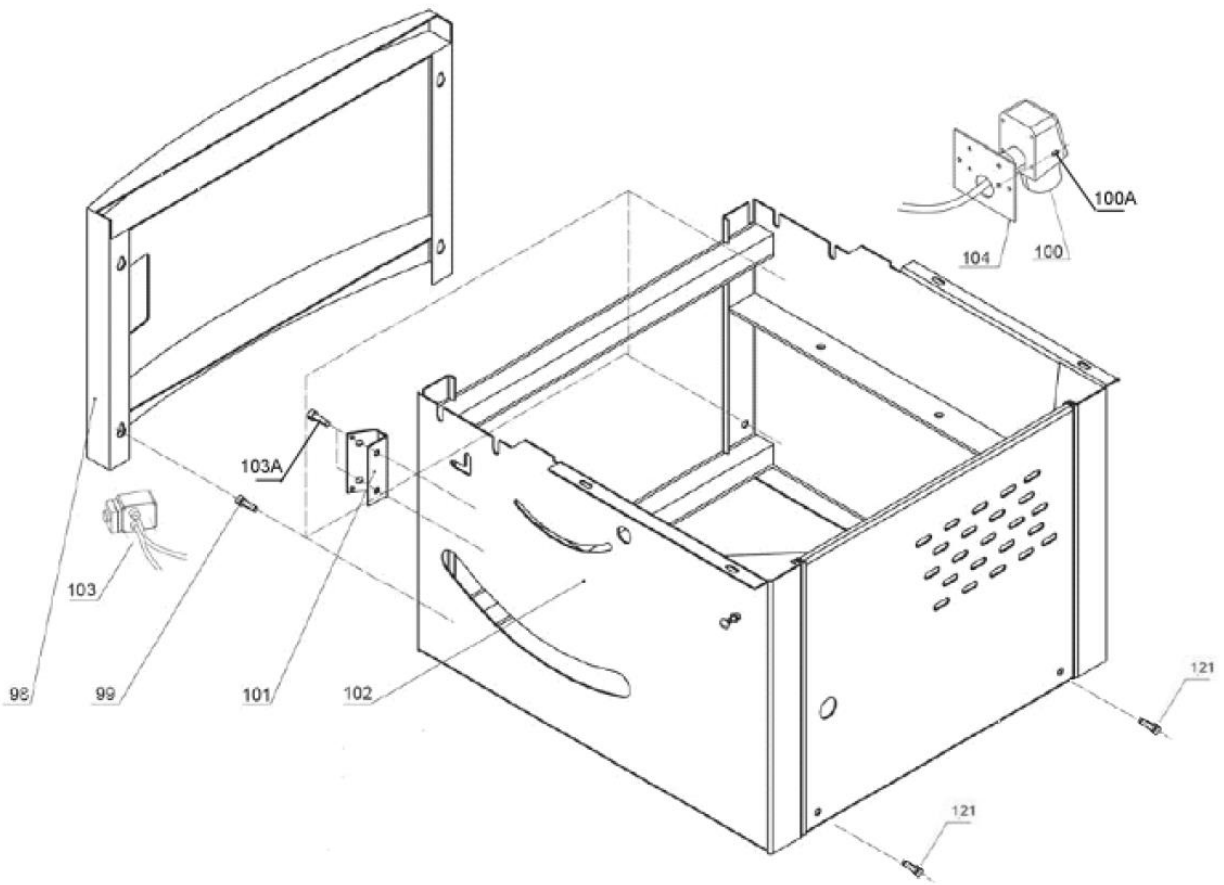
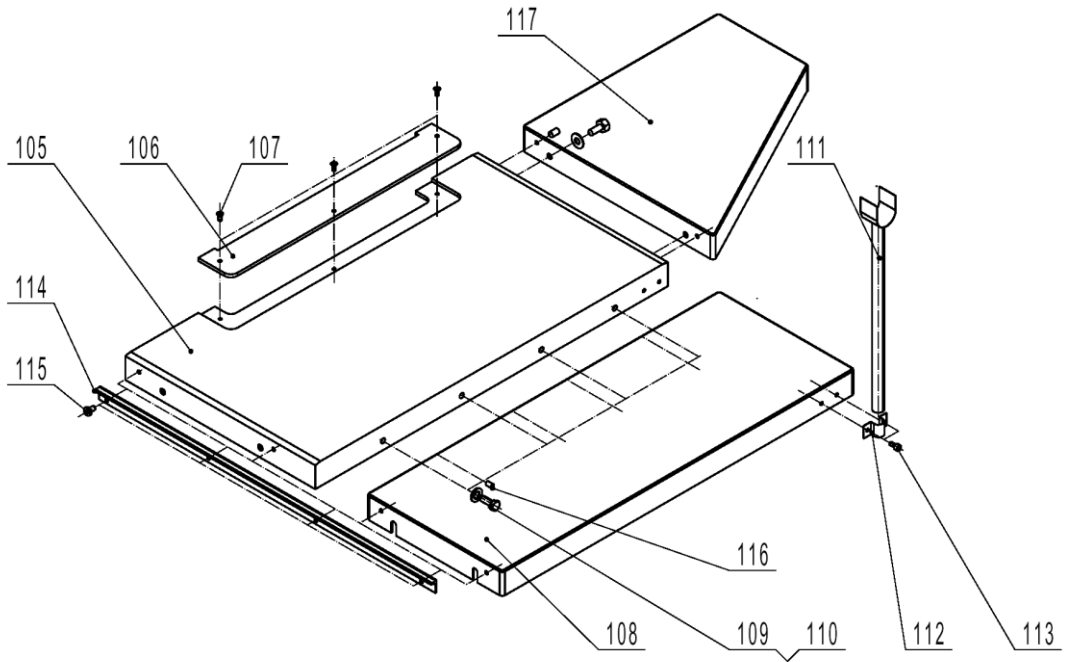
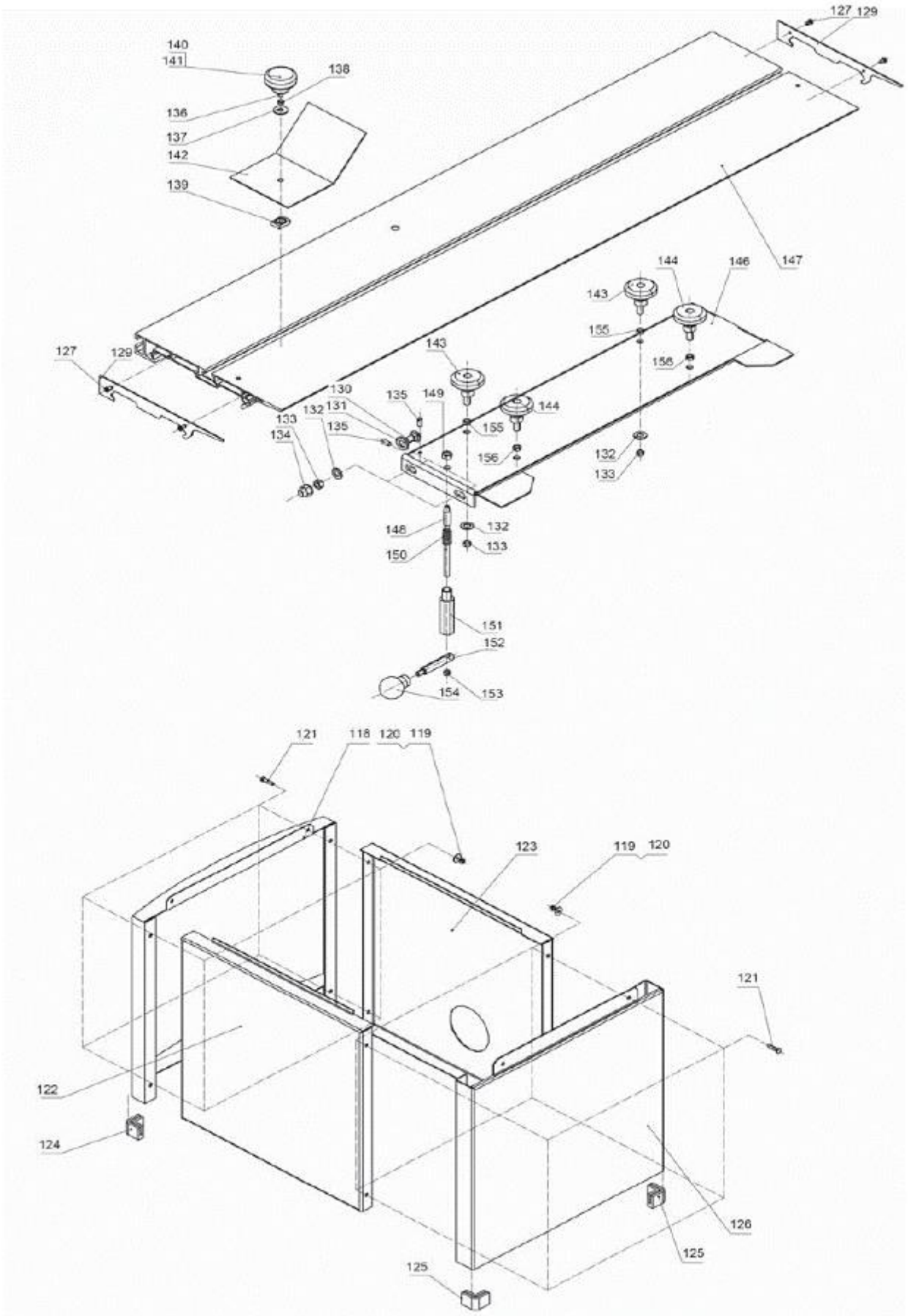


Table and Frame Assembly for JTS-600X

Index	Part No.	Description	Size	Qty.
98	JTS600-098	Upper acr panel		1
99	JTS600-099	Screw	M6X16	4
100	JTS600-100E	Plug 230V/50Hz/1		1
	JTS600-100AE	Plug 400V/50Hz/3		1
100A	JTS600-100A	Screw	M4X15	4
101	JTS600-101	Switch mounting plate		1
102	JTS600-102	Upper frame assembly		1
103	JTS600-103E	Switch Assembly 230V/50Hz/1		1
	JTS600-103AE	Switch Assembly 400V/50Hz/3		1
103A	JTS600-103A	Screw	M4X60	2
104	JTS600-104	Plug mounting plate		1
105	JTS600X-105	Main table		1
106	JTS600-106	Table insert		1
107	JTS600-107	Screw	M5x8	3
108	JTS600X-108	Right Extension Table		1
109	JTS600-109	Hex bolt	M8X12	6
110	JTS600-110	Washer	8	6
111	JTS600-111	Support bracket		1
112	JTS600-112	Semicircular bracket		1
113	JTS600-113	Hex socket screw	M6X16	2
114	JTS600-114	Front rail		1
114S	JTS600-114S	Scale		1
115	JTS600-115	Pan head screw	M6X16	4
116	JTS600X-116	Hex socket set screw	M6X12	6
117	JTS600X-117	Rear extension table		1

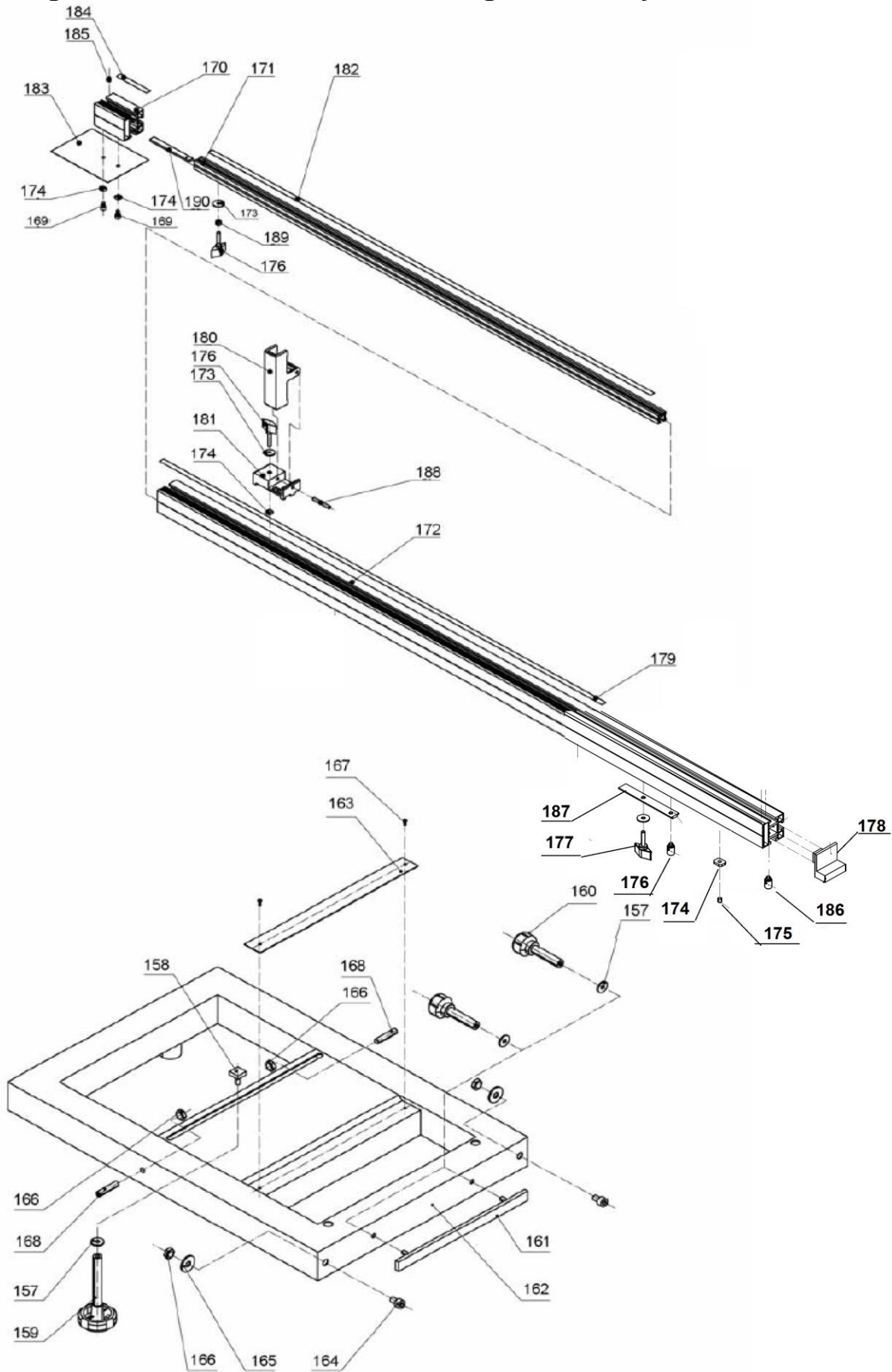
Sliding Table and Cabinet Assembly for JTS-600X



Sliding Table and Cabinet Assembly for JTS-600X

Index	Part No.	Description	Size	Qty.
118	JTS600-118	Lower arc panel		1
119	JTS600-119	Nut	M6	8
120	JTS600-120	Washer	6	8
121	JTS600-121	Hex screw	M6X15	8
122	JTS600-122	Base front panel		1
123	JTS600-123	Base rear panel		1
124	JTS600-124	Foot for arc panel		2
125	JTS600-125	Foot for side panel		2
126	JTS600-126	Base side panel		1
127	JTS600-127	Screw	M5X20	4
129	JTS600-129	Cover for sliding table		2
130	JTS600-130	Carriage bolt	M8X25	4
131	JTS600-131	Washer	8	4
132	JTS600-132	Washer	10	6
133	JTS600-133	Flange nut	M8	6
134	JTS600-134	Cap nut	M8	4
135	JTS600-135	Hex socket screw	M6X25	4
136	JTS600-136	Hex screw	M6X20	1
137	JTS600-137	Washer	6	1
138	JTS600-138	Nut	M6	1
139	JTS600-139	Square nut		1
140	JTS600-140	Knob cover		1
141	JTS600-141	Knob body		1
142	JTS600-142	Push plate		1
143	JTS600-143	Bearing tube with eccentric support		2
144	JTS600-144	Bearing tube with centric support		2
146	JTS600-146	Base support for table		1
147	JTS600-147	Sliding table		1
148	JTS600-148	Position pin		1
149	JTS600-149	Hex thin nut	M12X1.5	1
150	JTS600-150	Spring		1
151	JTS600-151	Position tube		1
152	JTS600-152	Handle rod		1
153	JTS600-153	Nut	M6	1
154	JTS600-154	Handle star knob		1
155	JTS600-155	Thin self locking nut	M8	2
156	JTS600-156	Thin nut	M8	2

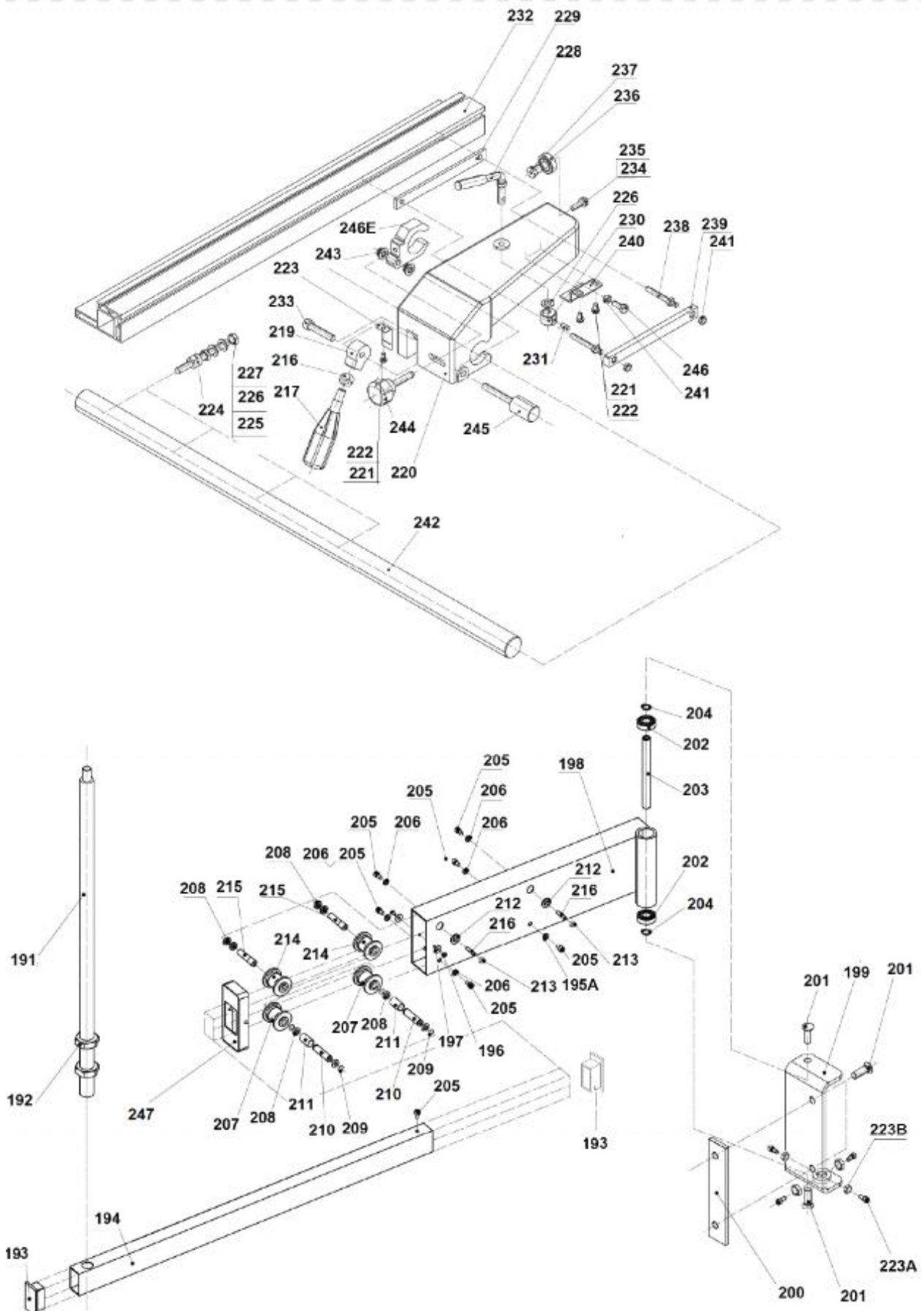
Outrigger Table and Pull-out Miter Gauge Assembly for JTS-600X



Outrigger Table and Pull-out Miter Gauge Assembly for JTS-600X

Index	Part No.	Description	Size	Qty.
157	JTS600-157	Washer	6	7
158	JTS600-158	Locking block		1
159	JTS600-159	Locking handle		1
160	JTS600-160	Locking handle		2
161	JTS600-161	Clamping plate		1
162	JTS600-162	Ext. sliding frame		1
163	JTS600-163	Angle ruler		1
164	JTS600-164	Location screw		2
165	JTS600-165	Washer	8	2
166	JTS600-166	Hex nut	M8	4
167	JTS600-167	Revit		2
168	JTS600-168	Hex socket nut	M8X40	2
169	JTS600-169	Hex socket screw	M6X12	2
170	JTS600-170	Ext. bracket for lengthened		1
171	JTS600-171	Main bracket for lengthened ruler		1
172	JTS600-172	Fence		1
173	JTS600-173	Washer	6	2
174	JTS600-174	Square nut		4
175	JTS600-175	Hex socket screw	M6X10	1
176	JTS600-176	Knob		3
177	JTS600-177	Pivot		1
178	JTS600-178	Fence cover		1
179	JTS600-179	Ruler I		1
180	JTS600-180	Location block		1
181	JTS600-181	Sliding block		1
182	JTS600-182	Ruller III		1
183	JTS600-183	Location plate		1
184	JTS600-184	Ruler II		1
185	JTS600-185	Hex socket screw	M5X6	1
186	JTS600-186	Pan head screw	ST4X6	1
187	JTS600-187	Long plate		1
188	JTS600-188	Pin	6x45	1
189	JTS600-189	Tube		1
190	JTS600-190	Fixing plate		1

Swing Arm and Rip Fence Assembly for JTS-600X



Swing Arm Assembly for JTS-600X

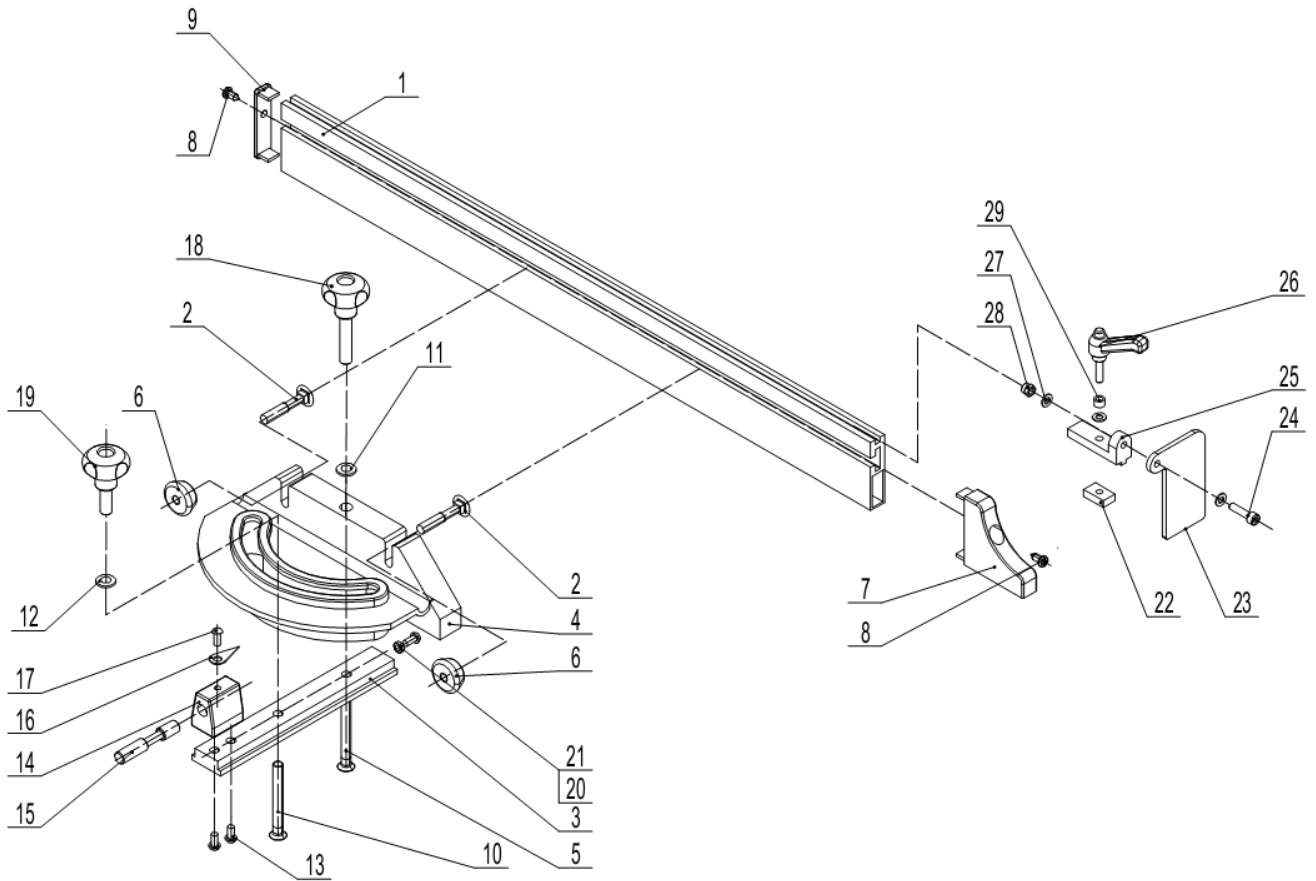
Index	Part No.	Description	Size	Qty.
191	JTS600-191	Support rod		1
192	JTS600-192	Nut	M20	2
193	JTS600-193	Tube cap		2
194	JTS600-194	Telescopic tube		1
195A	JTS600-195A	Magnetic steel		1
196	JTS600-196	Screw	M4X8	2
197	JTS600-197	Washer	5	2
198	JTS600-198	Support for telescopic tube		1
199	JTS600-199	Fixing bracket		1
200	JTS600-200	Connection plate		1
201	JTS600-201	Hex socket screw	M10X25	4
202	JTS600-202	Bearing	6202-RZ	2
203	JTS600-203	Shaft		1
204	JTS600-204	Clip ring	15	2
205	JTS600-205	Screw	M6X10	7
206	JTS600-206	Washer	M6	5
207	JTS600-207	Lower wheel		2
208	JTS600-208	Bearing	61801-RZ	8
209	JTS600-209	Clip ring	12	4
210	JTS600-210	Shaft		2
211	JTS600-211	Tube		2
212	JTS600-212	Outside baffle		2
213	JTS600-213	Nut	M6	2
214	JTS600-214	Upper wheel		2
215	JTS600-215	Eccentric shaft		2
216	JTS600-216	Hex socket screw	M6X25	2
217	JTS600-217	Locking handle		1
218	JTS600-218	Nut	M10	1
219	JTS600-219	Cam		1
219A	JTS600-219A	Cam & handle assembly(#217, Thu 219)		1
223A	JTS600-223A	Screw	M6X30	4
223B	JTS600-223B	Nut	M6	4

Rip Fence Assembly for JTS-600X

Index	Part No.	Description	Size	Qty.
	JTS600-216-246E	Rip fence Assembly(#220 thru #247)		1
220	JTS600-220	Rip fence bracket		1
221	JTS600-221	Screw	M5X8	3
222	JTS600-222	Washer	5	3
223	JTS600-223	Clip spring		1
224	JTS600-224	Stud		4
225	JTS600-225	Nut	M8	4
226	JTS600-226	Washer	8	9
227	JTS600-227	Nut	M8	4
228	JTS600-228	Handle		1
229	JTS600-229	Locking plate I		1
230	JTS600-230	Locking cam wheel		1
231	JTS600-231	Hex socket srcew	M8X18	1
232	JTS600-232	L-shape rip fence		1
233	JTS600-233	Hex socket srcew	M8X40	1
234	JTS600-234	Hex screw	M6X20	1
235	JTS600-235	Washer	6	1
236	JTS600-236	Bearing	6000-RZ	1
237	JTS600-237	Bearing bracket		1
238	JTS600-238	Locking screw		2
239	JTS600-239	Locking plate II		1
240	JTS600-240	Support plate		1
241	JTS600-241	Hex nut	M6	5
242	JTS600-242	Fence bracket rail		1
243	JTS600-243	Self locking nut	M8	2
244	JTS600-244	Star locking handle		1
245	JTS600-245	Micro adjust handle		1
246	JTS600-246	Hex screw	M6X16	1
246E	JTS600-246E	Clamping bracket		1
247	JTS600-247	Insert, Swing Arm		1

Mitre Gauge Assembly for JTS-600X-----Optional Accessory

Stock Number: 1000073



Mitre Gauge Assembly for JTS-600X-----Optional Accessory

Stock Number: 10000073

Index	Part No.	Description	Size	Qty.
1	JTS600XL-MG1	Mitre fence profil		1
2	JTS600XL-MG2	Carriage bolt	M6X30	2
3	JTS600XL-MG3	T-Bar		1
4	JTS600XL-MG4	Mitre Gauge		1
5	JTS600XL-MG5	Pan Head Srcew	M6x70	1
6	JTS600XL-MG6	Knurled Nut		2
7	JTS600XL-MG7	Right Cover for fip fence		1
8	JTS600XL-MG8	Self Tapping Screw		2
9	JTS600XL-MG9	Left Cover for fip Fence		1
10	JTS600XL-MG10	Pan Head Screw	M6X50	1
11	JTS600XL-MG11	Washer	6	1
12	JTS600XL-MG12	Washer	6	2
13	JTS600XL-MG13	Srcew	M4x12	2
14	JTS600XL-MG14	Indicator Bracket		1
15	JTS600XL-MG15	Location Pin		1
16	JTS600XL-MG16	Indicator		1
17	JTS600XL-MG17	Screw	M4x8	1
18	JTS600XL-MG18	Handle		1
19	JTS600XL-MG19	Handle		1
20	JTS600XL-MG20	Nut	M4	3
21	JTS600XL-MG21	Screw	M4x16	3
22	JTS600XL-MG22	Square Nut		1
23	JTS600XL-MG23	Stoper		1
24	JTS600XL-MG24	Set Screw	M5x20	1
25	JTS600XL-MG25	Stoper Breaket		1
26	JTS600XL-MG26	Locking Handle		1
27	JTS600XL-MG27	Washer	5	3
28	JTS600XL-MG28	Nylon Nut	M5	1
29	JTS600XL-MG29	Sleeve		1

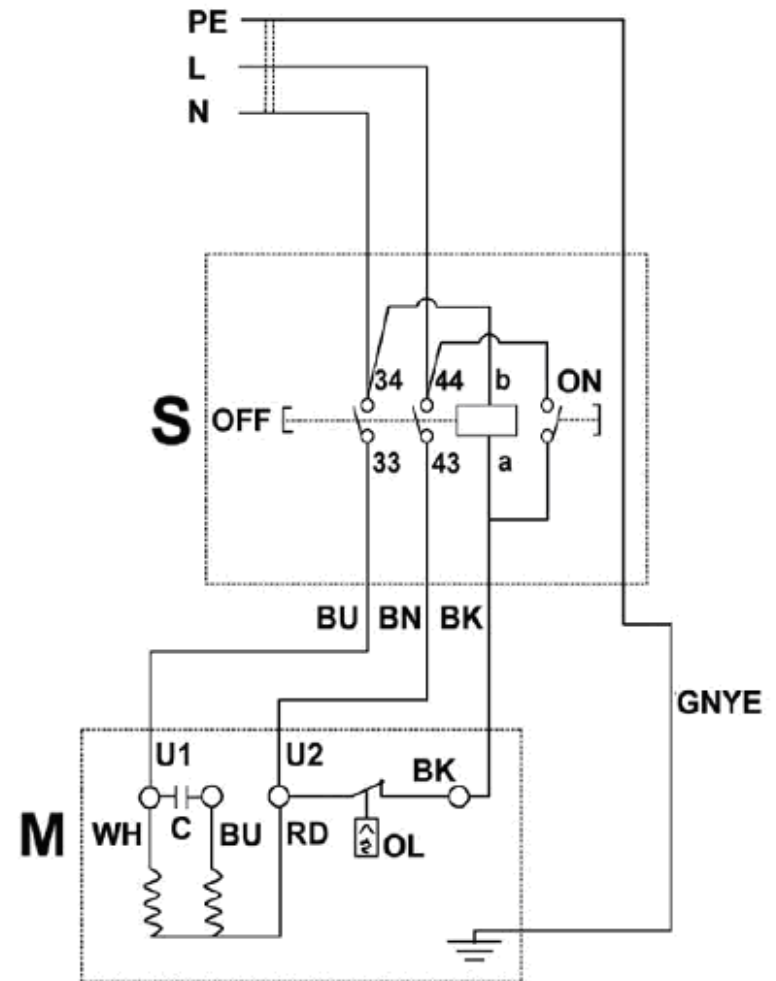
JTS-600X

1000060XM

230/50/1

	colour of strands	Litzenfarben	couleur des cordons
BK	black	schwarz	noir
WH	white	weiß	blanc
BU	blue	blau	bleu
YE	yellow	gelb	jaune
RD	red	rot	rouge
BN	brown	braun	brun
GY	grey	grau	gris
GNYE	green-yellow	grün-gelb	vert-jaune
OG	orange	orange	orange
VT	violet	violett	violet

	meaning of symbol	Bedeutung der Zeichen	interprétation
M	motor	Motor	moteur
S	switch	Schalter	interrupteur
C	condenser	Kondensator	condensateur
OL	overload cut-off	Überlastschuttschalter	déclencheur surcharge



JTS-600X

10000060XT

400/50/3

	colour of strands	Litzenfarben	couleur des cordons
BK	black	schwarz	noir
WH	white	weiß	blanc
BU	blue	blau	bleu
YE	yellow	gelb	jaune
RD	red	rot	rouge
BN	brown	braun	brun
GY	grey	grau	gris
GNYE	green-yellow	grün-gelb	vert-jaune
OG	orange	orange	orange
VT	violet	violett	violet

	meaning of symbol	Bedeutung der Zeichen	interprétation
M	motor	Motor	moteur
S	switch	Schalter	interrupteur
C	condenser	Kondensator	condensateur
OL	overload cut-off	Überlastschuttschalter	déclencheur surcharge

